

## IT-82TH Multi-function OTDR



## Functions

---

1. OTDR: 1310/1550nm , 22/20dB, 0-60km
2. Optical Power Meter : -70~+10dbm or -50~+26dbm
3. Visual Fault Locator :  $\geq 10\text{mw}$
4. Optical Light Source : 1310/1550nm ,  $\geq -5\text{dBm}$
5. Optic Loss
6. Line Order (Optional)
7. Tracing Test (Optional): Can track the direction of the found line.
8. LED lighting function, dark environment construction is more convenient

## Features

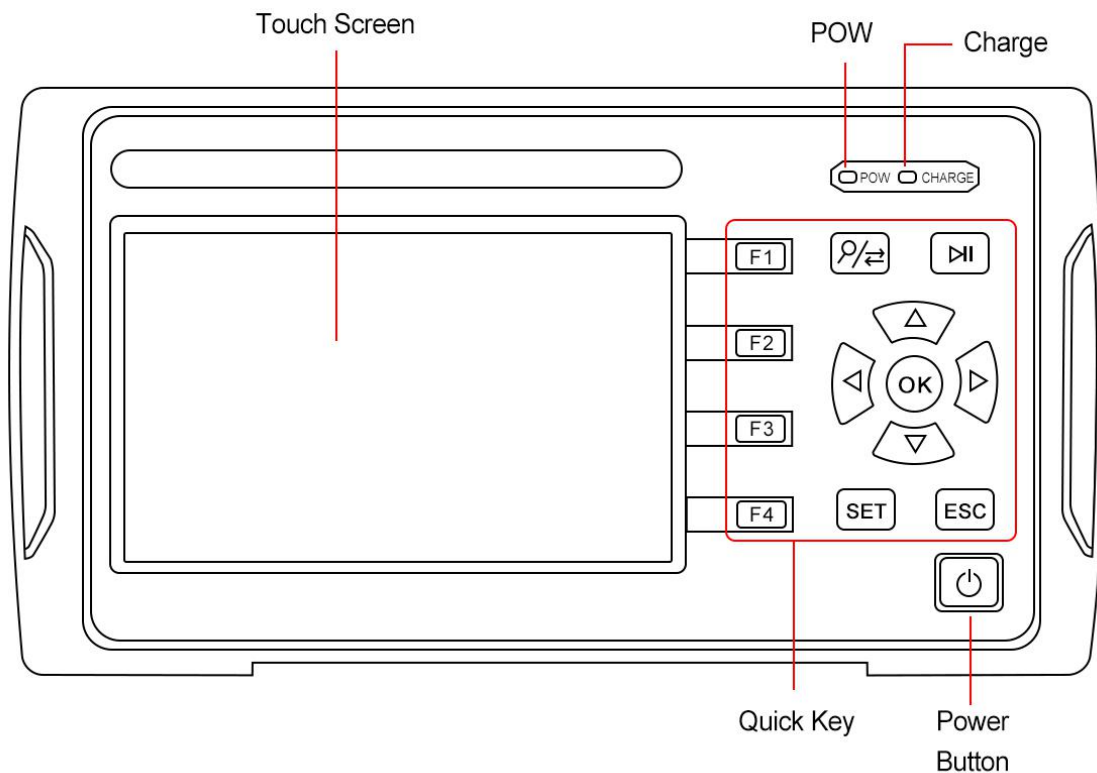
1. Two wavelength: 1310/1550nm
2. Measurement distance: 60km
3. Touching screen
4. Test record can be saved as so format
5. Standard Function: OTDR/Optical Power Meter/ Optical Light Source/ Visual Fault Locator/  
Optic Loss/ Light  
Optional Function: Line Order/ Tracing Test
6. Editable file name and lineNo.
7. Support upgrade
8. Quick boot, it takes only 2 seconds to test

## Specifications

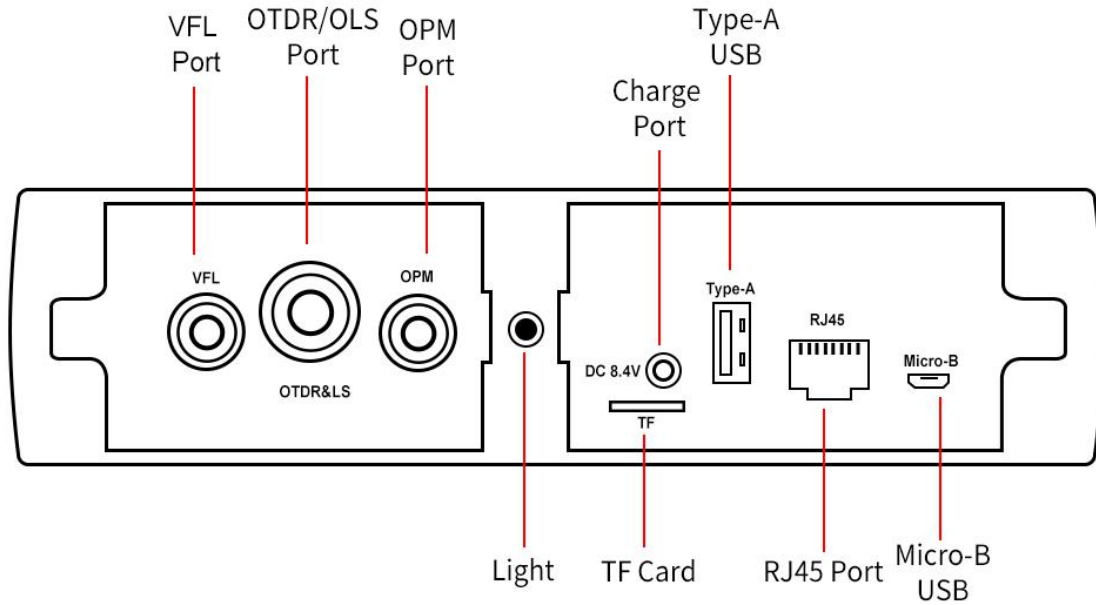
OTDR	
Wavelength(nm)	1310/1550nm
Dynamic Range	22/20dB
Measurement Distance	0-60 km
Type of Fiber	9/125um SM
Type of Connectors	FC/PC/; SC/PC (FC/APC SC/APC--Optional)
Peak Value of laser	>=30mW
Unit	Meter/ inch/ mile
Dead Zone of Reflection	2m
Dead Zone of attenuation Event	12m
Accuracy Distance (Reflection Event)	About $\pm(1m+2 *10^{(-4)} * \text{distance})$
Storage of records	200 groups
Visual Fault locator (VFL)	
Wavelength (nm)	650nm
Output power	>=10mW
Mode	CW, 1Hz, 2Hz
Fiber type	SM
Optical Power Meter	
Measurement range dBm	-70~+10 dBm      -50~+26 dBm
Wavelength range (nm)	800~1650
Calibrated wavelength	850、1300、1310、1490、1550、1625
Detector	InGaAs
Accuracy	< $\pm$ 3% (-10dBm、22℃)
Resolution	Linearity: 0.1%, Non-linearity: 0.01dBm
Connector	Changeable FC/PC SC/PC ( ST as Optional)

Optical Light Source	
Emitter	FP-LD
wavelength (nm)	1310/1550nm
Connector	FC/PC (SC/ST as optional)
Output power	≥-5dBm
Output stability(dBm)	±0.04@20°C@15min
Modulation	CW/270Hz/1KHz/2KHz
Fiber type	SM
Optic Loss	
Connector	FC/ SC
Test Range	0-30dB
Accuracy	10%
Others	
LCD	3.97inch,800*480pixels, IPS screen
Battery	7.4V/4400mAH Lithium-ion battery, >5000 tests
Temperature	Work temperature: -5 ~ 50 ° C, storage temperature: -10 ~ 60 ° C
Humidity	0~85%(Non-condensing)
Dimensions (mm)	190×84×52
Weight(g)	375
Standard Function	OTDR, OPM, OLS, VFL, Optic Loss,Light
Optional Function	Line Order, Tracing Test

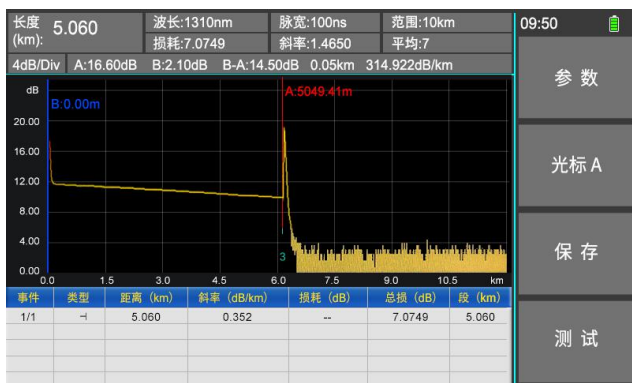
## Front Panel



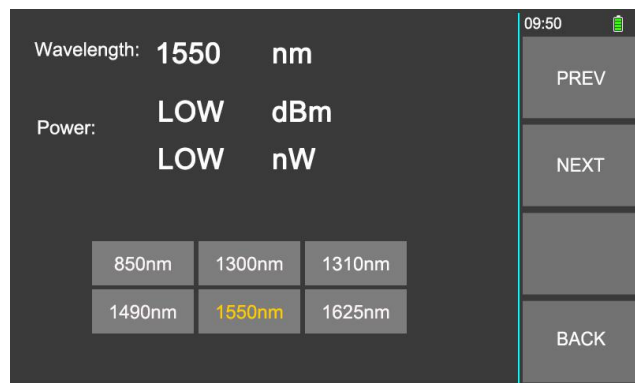
# Top Interface



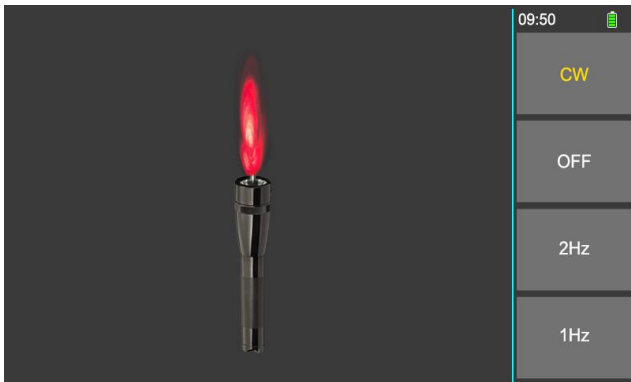
# Top Interface



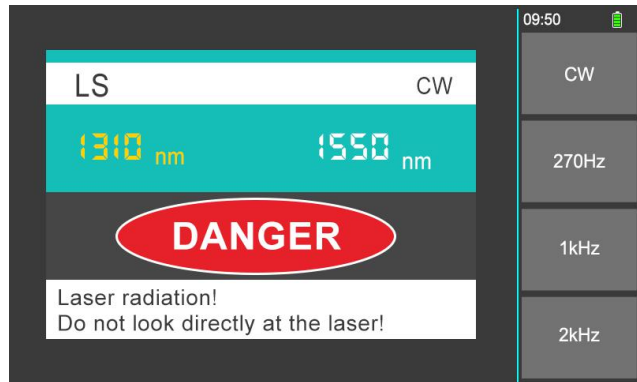
OTDR



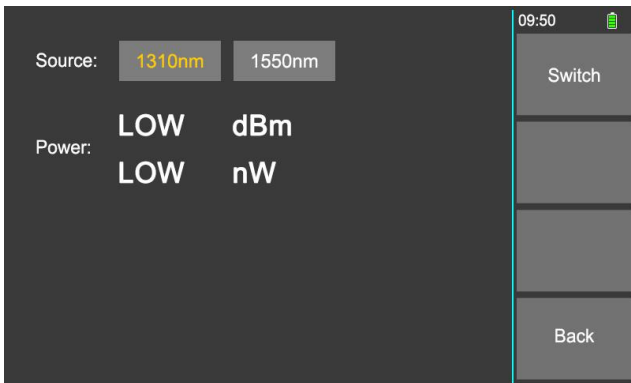
Optical Power Meter



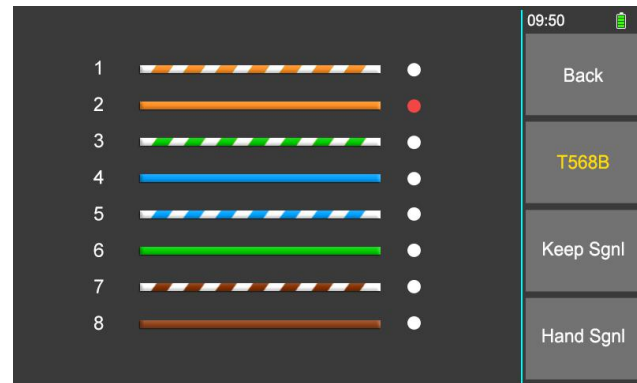
Visual Fault Locator



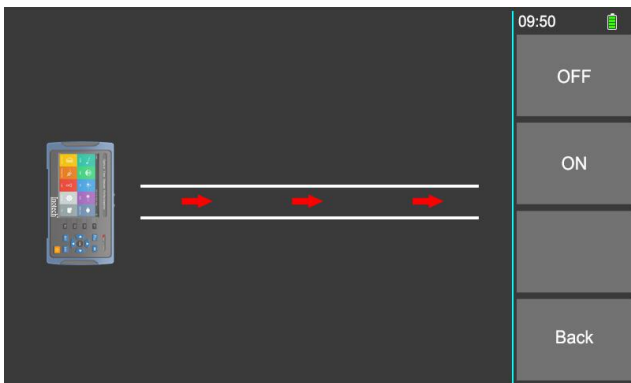
Optical Light Source



Optic Loss



Line Order (Optional)



Tracing Test (Optional)



Light

## Packing List

NO	Name	Qty
<b>Standard accessories</b>		
1	OTDR with FC/UPC connector	1
2	AC/DC Charger	1
3	CD (software and user manual)	1
4	User manual	1
5	Test Report	1
6	Softcase	1
<b>Optional Accessories</b>		
1	SC /ST connector for OTDR Port	1
2	SC/ST Connector for OPM port	1

Note: The default connector of this OTDR FC/UPC, and the FC/APC type is optional. The above contents are subject to change without notice due to the need for design improvement.

## Detailed Pictures

